

GENERAL PURPOSE HOSE - FABRIC REINFORCED FOR INCREASED TEMPERATURE - VERY LIGHTWEIGHT

Master-PUR GOLD

Material

Hose wall: thermoplastic polyurethane reinforced with high strength woven polyester fabric

Spiral: polyurethane coated spring steel wire, permanently bonded to hose wall

Applications

- Dust and wood-chip collection
- Paper trimmings
- Fiberboard plants
- Fume extraction
- Duct cleaning
- Lawn & garden
- Air-conditioning/ventilation systems
- Exhaust systems
- Fresh air ventilation
- Solvent-free
- Adhesive-free

Properties

- Excellent tear & puncture resistance
- Gas-tight
- UV/ozone resistant
- Great flexibility
- Excellent compression
- Lightweight
- Superior internal and external abrasion resistance
- Great flex and fatigue resistance
- Moisture resistant
- Low compression set

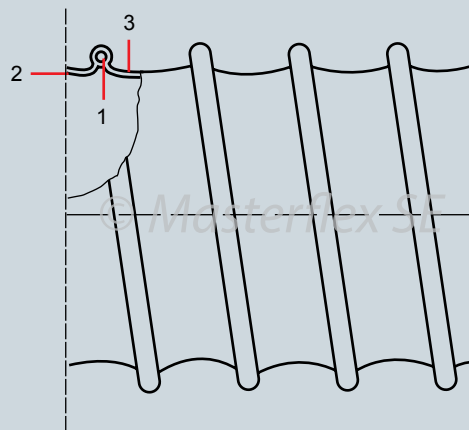
Advantages

- More abrasive resistant than other general purpose hoses
- Competitive pricing against other general purpose hoses
- Extremely versatile against competitive products such as TPR, neoprene, urethanes
- More uniform inner wall for improved flow
- External polyurethane coated wire acts as scuff strip
- Free of solvents or adhesives



Construction

1. Coated spring steel spiral
2. Hose wall: polyurethane reinforced with woven polyester fabric
3. Wall thickness between spirals .020"



Temperature Range

- -22°F to +300°F*
- Intermittent to +325°F

Chem. Resistance

- See resistance table

*Hoses operating near maximum temperature range should be used within a properly designed negative pressure fan system to avoid damaging the hose. Please consult your local representative for more details.

Master-PUR GOLD

Dia (in.)	Positive (in. w.c.)	Negative (in. w.c.)	*Bending radius (in.)	Outer Dia (in.)	Weight (lbs./ft.)	Product Code
3.00	282	236	3.00	3.32	.52	371-075-407
3.50	232	157	3.28	3.96	.53	371-090-407
4.00	212	157	3.50	4.32	.54	371-100-407
4.50	178	138	3.72	4.96	.58	371-115-407
5.00	176	138	3.95	5.36	.65	371-125-407
5.50	155	126	4.10	5.96	.70	371-140-407
6.00	142	118	4.25	6.36	.72	371-150-407
7.00	116	84	5.25	7.36	.95	371-175-407
8.00	106	67	6.25	8.40	1.18	371-200-407
9.00	78	60	6.70	9.40	1.22	371-225-407
10.00	72	55	7.25	10.40	1.34	371-250-407
12.00	66	42	9.00	12.40	1.72	371-300-407
14.00	56	29	10.35	14.40	2.08	371-350-407
16.00	48	17	11.20	16.40	2.56	371-400-407

*Referring to the inner side of the elbow of hose.
 The above mentioned data refers to an average and ambient temperature of 68° F. Subject to technical changes and color variations.
 Please refer to technical data sheet when selecting hose.

Standard Production

- Diameter: 3" to 16"
- Color: hose wall black with gold spiral
- Standard lengths: 25'

Available on Request

- Special wire colors
- Special lengths up to 50'
- Special diameters metric

Installation and connection possibilities



Master-grip hose clamp, screwable



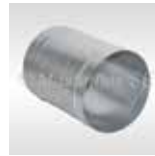
Hose clamp with worm-gear drive



Car-Grip hose clamp, screwable



Hose clamp with round pins



Hose connector



Hose reducer, symmetrical

Masterduct, Inc.
 5235 Ted Street
 Houston, TX 77040 USA
 Tel. +1 713 462-5779
 Tel. +1 800 318-3300
 Fax +1 713 939-8441
 www.Masterduct.com